

PRESSURE MEASURING SET FOR TESTS AND ADJUSTMENTS ON GAS HEATERS AND GAS BURNERS

In addition to the pressure gauge, the professional ecom-DP Profi Set also includes three connecting tubes for connection to the respective pressure test ports, two matching strapples, one T-piece with stopcock, as well as one pair of bellows for building closed-system test pressure for leak testing (also appropriate for general differential pressure measurements in a measuring range of 1500 hPa).

Technical Properties

Ranges	Resolution	Accuracy
0-1500 hPa	0.1 hPa	< 3% of the meas.value
0-1500 hPa*	0.1 hPa	< 3% of the meas.value
0-70 hPa*	0.1 hPa	< 3% of the meas.value



precise



safe

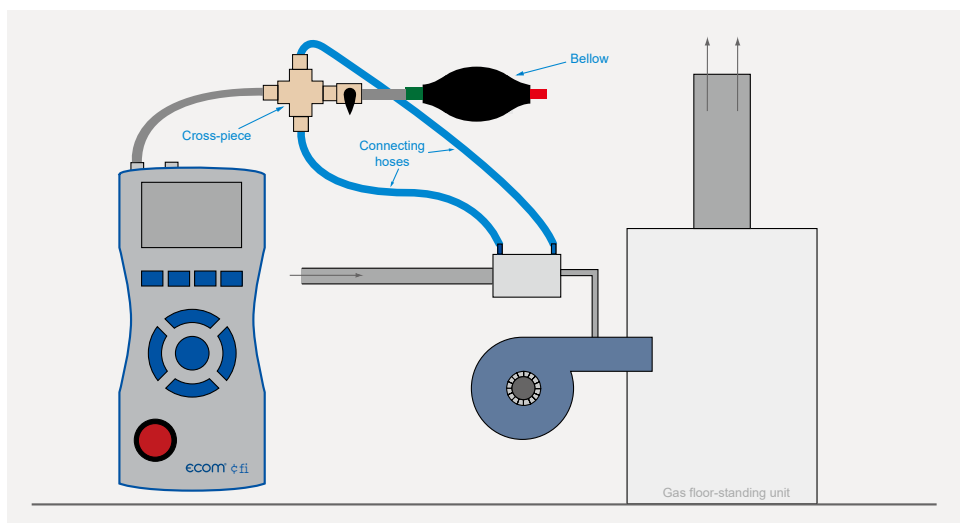
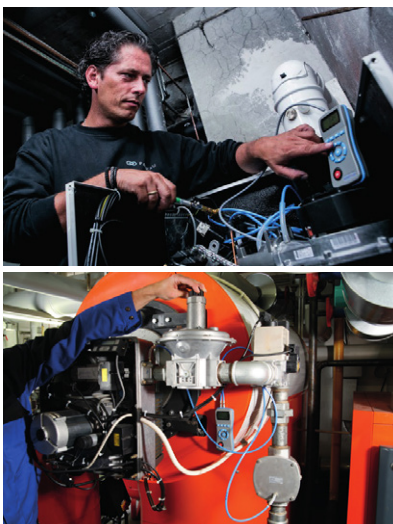


complete



ecom-DP Profi Set EXTREMELY customized.

- ✓ For pressure measurement in gas burners
- ✓ For leak testing in the gas fittings (± 100 to 150 hPa)
- ✓ Testing of the gas connection pressure
- ✓ Measurements of the adjusted gas pressure
- ✓ Adjustment of the gas pressure monitor
- ✓ Adjustment of the air pressure monitor
- ✓ Measuring instrument with backlit graphic display
- ✓ min./max. feature (stores the lowest and highest measured reading)
- ✓ Switch between units (hPa, cmH₂O, mmHg, PSI, Inch H₂O, Inch Hg)
- ✓ Adjustable parameters for stabilizing time, measuring time and testing



Application

The ecom-DP is designed to make easy pressure measurements and tightness checks at gas pipes and gas installations.



The USB cable can be used as the power supply for the ecom-DP. Therefore the function „Battery loading“ must be adjusted on „no“ when using 1,5 V AA (Mignon) batteries (see 6.4.)!

PRESSURE MEASUREMENT

- USABILITY CHECK / GAS PIPES -

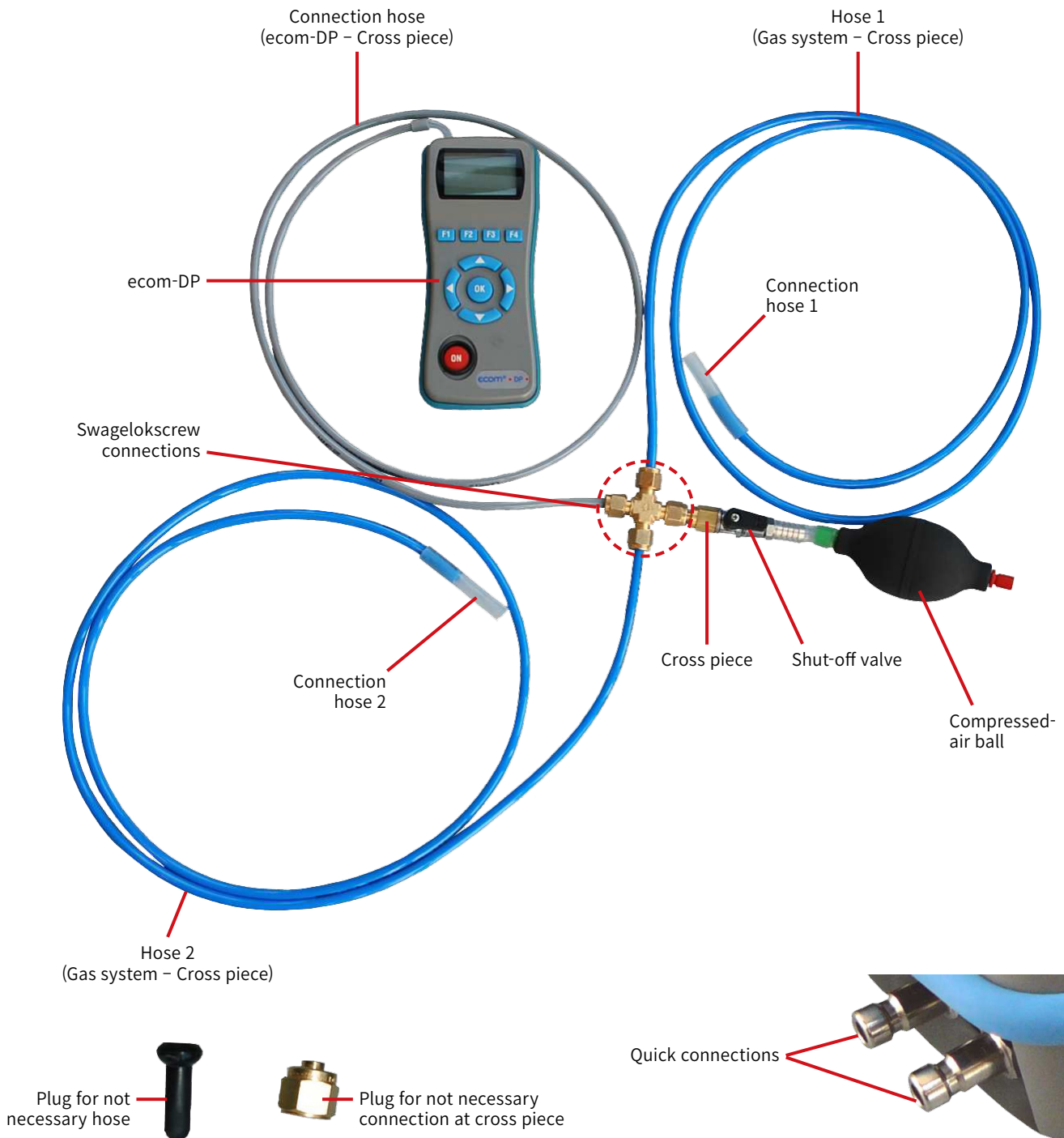
ecom[®] DP PROFI-SET

Design ecom-DP



Connection of components

Please connect the components as shown on below plan.



1. Please use for the pressure check only diffusion-close hoses!
2. For usual pressure measurements also not diffusion-close material like e.g. silicone may be used.
3. A silicone hose can be pushed directly over the quick connection.



If remounting the Swagelok-screw connections, please turn the nut firmly with your fingers and another 1/4 revolution with a wrench!

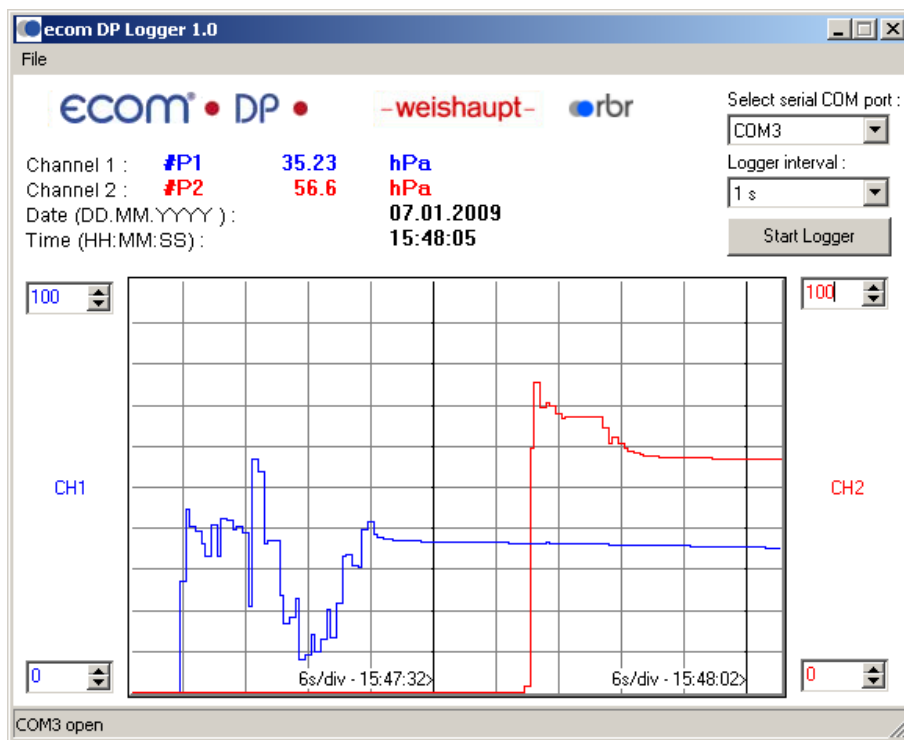
ecom-DP Profi Pressure Test Kit

TECHNICAL DATA ECOM-DP PROFI PRESSURE TEST KIT I		TECHNICAL DATA ECOM-DP PROFI PRESSURE TEST KIT II	
Application field:	Adjustment of gas burners: flow, plant, idle and nozzle pressure Tightness check of gas fittings (incl. accessories)	Application field:	Adjustment of gas burners: flow, plant, idle and nozzle pressure Tightness check of gas fittings (incl. accessories)
Pressure sensors:	1	Pressure sensors:	2
Measurement range:	0-1500 hPa	Measurement range:	0-1500 hPa
Resolution:	0.1 hPa	Resolution:	0.1 hPa
Accuracy:	± 3% of measured value	Accuracy:	± 3% of measured value
Indication:	Graphic display with window approx. 43 x 28 mm Resolution 128 x 64 Pixel	Indication:	Graphic display with window approx. 43 x 28 mm Resolution 128 x 64 Pixel
Power supply:	3 one-way batteries 1.5V AA (Mignon) or 3 rechargeable batteries 1.2V AA NiMh (metal hydride)	Power supply:	3 one-way batteries 1.5V AA (Mignon) or 3 rechargeable batteries 1.2V AA NiMh (metal hydride)
Battery charging:	Battery charging and operation with commercial USB charger possible	Battery charging:	Battery charging and operation with commercial USB charger possible
Ambient temperature:	0°C to 50°C	Ambient temperature:	0°C to 50°C
Operation temperature:	0°C to +40°C	Operation temperature:	0°C to +40°C
Positioning:	Integral magnet for positioning at metal surfaces	Positioning:	Integral magnet for positioning at metal surfaces
Data transfer:	PC software DP-Logger (download von www.seic.co.kr)	Data transfer:	PC software DP-Logger (download von www.seic.co.kr)
Dimensions:	approx. 170 x 75 x 35 mm (L x D x H)	Dimensions:	approx. 170 x 75 x 35 mm (L x D x H)
Weight:	approx. 300 g	Weight:	approx. 300 g
Delivery:	<ul style="list-style-type: none"> • 1 bellow • 1 cross-piece (SW) with adapter (SW) & gasket (SW) • 1 tap + spout • 2 stopples (1 x SW; 1 x plastics) • 3 hoses (2 x blue, 1.6 m; 1 grey, 1.2 m) each with connecting tubing piece • Plastics transport case with special foam insert • Dimensions: approx. 380 x 275 x 80 mm (L x B x H) • weight: approx. 1.4 kg 	Delivery:	<ul style="list-style-type: none"> • 1 bellow • 1 cross-piece (SW) with adapter (SW) & gasket (SW) • 1 tap + spout • 2 stopples (1 x SW; 1 x plastics) • 3 hoses (2 x blue, 1.6 m; 1 grey, 1.2 m) each with connecting tubing piece • Plastics transport case with special foam insert • Dimensions: approx. 380 x 275 x 80 mm (L x B x H) • weight: approx. 1.4 kg



ecom-DP Profi Set, complete with optional gas leak detector ecom-LSG and accessory

Data logger program „ecom-DP Logger“



The measured value process of the **ecom-DP** can be logged with the help of the data logger program „ecom-DP Logger“. The program can be loaded free of charge from the download area of the rbr homepage www.rbr.de. To transfer the data a USB cable (kind becomes. - No.: 55818) and a driver (free download from www.seic.co.kr) is needed. The measured value rows can be stored in the xls format (Excel).



The USB cable can be used as the power supply for the ecom DP. Therefore the function „Battery loading“ must be adjusted on „no“ when using 1,5 V AA (Mignon) batteries!